

Bishop-Wisecarver (BW) develops innovative motion solutions that are expertly designed and delivered to perform from a company you can trust. Leveraging nearly 70 years of experience, Bishop-Wisecarver has earned the reputation for providing unmatched quality, reliability, service and engineering support for every stage of a customer's design cycle. Combining long-lasting performance with ease of installation, our products offer the lowest cost of ownership for a wide variety of applications ranging from aerospace and medical to packaging machinery and more.

## Service and Solutions

### Automation & Motion Control Systems

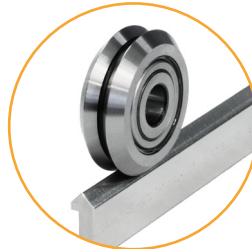
BW provides complete automation and robotic motion systems that are used in a wide range of applications from food packaging machinery to motion picture filming sets. We develop and supply integrated motion control projects involving durable mechanical products, electronic systems, and software programming.

## Complex Assemblies & Solutions

BW is a trusted supply chain partner that extends the capabilities and success of our customers' businesses. We consolidate multiple vendors and parts into complete sub-assemblies and solutions that streamline sourcing, scheduling, and production. We offer complex assembly of mechanical and electrical components into products that are ready for installation and operation.

## Motion Products & Production Support

BW offers the widest range of guide wheel based linear motion solutions in the world. Many standard catalog items are available in a variety of designs, sizes, and materials suited for every operation environment. We customize products for specific applications or requirements and are a trusted supply chain partner for manufactured and assembled automation products.



DUALVEE® ON TRACK



UTILITRAK® WITH BRIDGE KITS



BELT DRIVEN LOPRO®



1TRACK

## Corporation Office

Bishop-Wisecarver  
2104 Martin Way  
Pittsburg, CA 94565  
Phone 925.439.8272  
Fax 925.439.5931



## Shanghai Office

No 218, Heng Feng road, Room 1007  
Shanghai 200070, China  
+86.21.60400516  
bsun@bwc.com

## Scott Cain, Regional Sales Manager West

925.597.2874  
scain@bwc.com

## David Drudge, Regional Sales Manager Southeast

404.938.6773  
ddrudge@bwc.com

## Ryan Tynan, Regional Sales Manager Southwest

925.597.0666  
rtynan@bwc.com

## Bill LeBeau, Regional Sales Manager Eastern

401.871.3796  
blebeau@bwc.com

## Dan Passero, Director of Sales Distribution

925.597.1709  
dpassero@bwc.com

## Rick Tkaczyk, Vice President of Sales

925.597.3577  
rtkaczyk@bwc.com

## Pamela Kan, President

925.584.0713  
pkan@bwc.com

# Business Capabilities

---

Bishop-Wisecarver is a trusted and reliable partner for engineered linear and rotary motion products used in robotics and automated motion control projects that range from standard catalog motion components to complete custom complex integrated motion systems. Our innovative products, world-class engineering, and custom manufacturing capabilities offer unsurpassed design flexibility. Motion solutions from Bishop-Wisecarver are limited only by your imagination.

## Complex Assemblies

- Electro-mechanical assembly
- Supply chain & assembly services
- Purchase order consolidation
- Vendor management

## Motion Products

- Linear guide bearings
- Linear actuators & motion stages
- Rotary & curvilinear motion guides
- Automated motion systems

## Automation & Integration

- Mechanical motion system design
- Electronic controls engineering
- Software & motion system integration
- Motion control system analysis

## Production Support

- Profile extrusion design & finishing
- CNC milling/turning, grinding
- Fabrication, prototypes, production
- Finish coating, anodizing, painting

## Top NAICS and UNSPC Codes

### 325414

Biological Product (Except Diagnostic) Manufacturing

### 332312

Fabricated Structural Metal Manufacturing

### 332710

Machine Shops

### 332721

Precision Turned Product Manufacturing

### 332999

All Other Miscellaneous Fabricated Metal Product Manufacturing

### 2315341

Custom Assembly Fixtures or Tooling (UNSPSC Code)

### 333111

Farm Machinery and Equipment Manufacturing

### 333241

Food Product Machinery Manufacturing

### 333517

Machine Tool Manufacturing

### 333993

Packaging Machinery Manufacturing

### 333999

All Other Miscellaneous General Purpose Machine Manufacturing

### 336413

Other Aircraft Parts and Auxiliary Equipment Manufacturing

### 336414

Guided Missile and Space Vehicle Manufacturing

### 334314

Relay and Industrial Control Manufacturing

### 334511

Search, Detection, Navigation, Guidance, Aeronautical and Nautical System and Instrument Manufacturing

### 334515

Instrument Manufacturing for Measuring and Testing Electricity and Electrical Signals

### 334516

Analytical Laboratory Instrument Manufacturing

### 334519

Other Measuring and Controlling Device Manufacturing

### 541330

Engineering Services

# Technical Capabilities

## Assembly Service and Kitting

- Up to 40k feet of available contract manufacturing production floor space
- Kitting and sub-assemblies to full turnkey solutions
- Quality traceability reports available
- Flexible, scalable workforce
- Single prototypes to thousands per month

## Fabrication and Production

- Precision CNC machining
  - Milling, boring, turning, engraving
- Product finishing operations
  - Painting, anodizing, plating, coating
  - Heat-treating, hardening, annealing
- Sheet metal fabrication
- Waterjet and laser cutting up to 60"x120"
- Quality inspection certification, CMM reporting, hardness testing

## Engineering Solutions and Design

- Mechanical design
  - Motion systems and actuators
  - Mounting systems and support structures
  - Electronics packaging
- Electrical design
  - Controllers
  - Amplifiers
  - Transducers (sensors, motors)

## New Product Introduction

- Prototyping
- Design refinement for production
- Supply chain development
- Alpha beta testing

## Motion Control

- Multi-axis motion control
- Customizable motion trajectories
- Servo drive controllers
- Microcontrollers
- Programmable logic controllers

## Engineering Analysis and Modeling

- 3D CAD modeling and 2D drawings
  - Components and assemblies
  - Manufacturing ready designs
  - Dimensioning and Tolerancing
- Finite Element Analysis
  - Mechanical and structural
  - Stress analysis
  - Modal analysis

## Motion Control

- Actuators
- Sensors
- Electronics
- Integrating mechanical actuators

## Quality Certifications



## Business Certifications

EN 9100:2009  
JISQ 9100:2009  
ISO 13485  
& GMP Compliance  
Certified Bay Area  
Green Business

## Continuous Improvement Programs

Six Sigma  
Kaizen / Lean  
7Q  
Sustainability Efforts

# Customer Centric

When engaging with Bishop-Wisecarver, customers can expect a Signature Experience as it relates to prompt customer service, technical collaboration and exceptional lead times. As a result, our commitment consistently fulfills expectations with reliable motion solutions that are on time and on budget, with no surprises.

## SIGNATURE EXPERIENCE

### Signature Experience™ Promise

- 1 We ensure Bishop-Wisecarver is a Right Fit
- 2 Documented Needs Assessment is provided to the customer for orders over \$20,000
- 3 Customer receives customized solution for their need - even if just one unit
- 4 We deliver the order when needed and promised
- 5 Customer knows we appreciate their business at every step
- 6 We proactively communicate with the customer, keep them up to date; building confidence in Bishop-Wisecarver
- 7 We validate post order that we have met/exceeded our customer's definition of success
- 8 We guarantee we got it right = 100% Customer Satisfaction

