

SERVICE, SUBASSEMBLIES, & CUSTOMIZED MOTION SOLUTIONS

THE SOLUTION IS MORE THAN JUST THE METAL

Sometimes you need a partner to provide solutions that are more than just the metal parts. Close engineering support, unique product customizations, and supply chain services can extend the capabilities and the competitive position of your business. Selecting a supplier that can deliver upon more than just the fabricated metal parts with additional support services such as streamlined sourcing processes, subassemblies, and complete customized motion solutions will greatly increase your ease of doing business.

Services & Production Related Support

It can be a challenge to select an ideal vendor from the many capable suppliers who can satisfy the complex requirements for your business or motion control related projects. It is important to consider more factors than simply relying upon a products suitability, availability and price. Oftentimes additional services and production related support can make a significant improvement in streamlining your sourcing activities and your product realization efforts. Here are a few of the many support services offered by Bishop-Wisecarver® that can be used to help your business succeed.

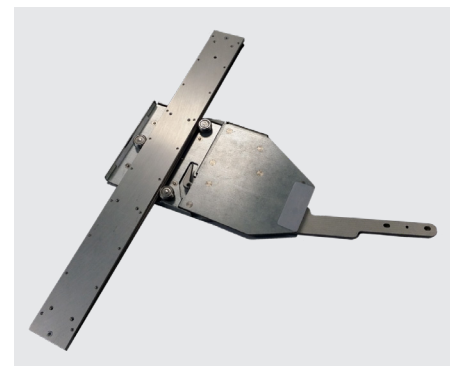
Raw material certifications are frequently required by end-users for projects in highly regulated industries such as aerospace. Bishop-Wisecarver® is AS9100D certified and can supply raw material certifications if necessary.

Inspection documentation improves accountability and is often a necessary part of supply chain management activities. Higher levels of inspection, such as part evaluation by a coordinate measuring machine (CMM), and customized testing and recording requirements can be satisfied. Test reports and certificates of conformance (C of C's) can be provided.

Product serialization can greatly improve traceability and makes it possible to link a specific product back to an inspection report. Some products may require identification numbered by the production batch while other products can be individually serialized.

Factory assembled and adjusted products can save time and labor cost during installation and machine assembly because the critical adjustment steps were previously completed by highly skilled factory personnel.

Top level sourcing of a single part number for a subassembly is ideal for simplifying a complex supply chain. Let us manage the supply chain for you and provide finished assemblies that are made from many parts from many suppliers. With proper scheduling and consigned inventory, even the most complex project can meet on time delivery requirements. The pivot arm assembly is an example that is supplied in a high monthly volume. See the image at right



Product Customizations

Standard products are designed to work generally well in a wide range of applications, but most projects require some degree of product customization to satisfy specific requirements. Consider sourcing as many steps of a project from the fewest number of possible vendors to save cost and time.

SERVICE, SUBASSEMBLIES, & CUSTOM MOTION SOLUTIONS

Modified standard products are modifications to off-the-shelf products that are often simple and fast to complete such as machining a few threaded holes, shaving areas down a few millimeters, or cutting profiles to specified lengths.

Finishing operations can be completed and supplied on products thereby reducing the number of subcontractors and eliminating multiple shipments so that the supply chain complexity is reduced. Source parts from vendors that can provide several of the necessary processing operations. Common finishing operations include heat treating and applying coatings such as anodize, black oxide, or high-quality paint.

Labeling requirements can be met so that when the finished products are received there are fewer operations remaining to complete the assembly. Bishop-Wisecarver® can supply finished products that are complete with markings and identification labels including highly durable ink stamping, laser engraving, and adhesive labels.

Motorized actuator assemblies are ready to install motion systems that can be supplied completely assembled and ready to installation. A wide range of additional necessary components can be provided including motor mounts, gear reducers, travel limit sensors, and connecting shafts.

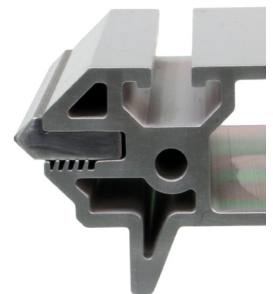
Packaging and crating can ensure that the finished products make it to the end-user undamaged and secure. Customized packaging can be readily developed for any shipping or warehousing concern.

Engineering Support

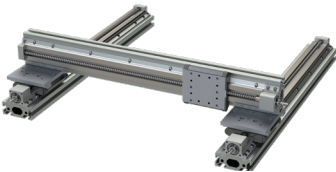
The engineers at Bishop-Wisecarver® are ready to work as an extension of your engineering team. Project support is available for every stage from the initial design concept, building the first prototype, performance testing and evaluation, and late product lifecycle cost reduction. Many companies have collaborated with our engineering support to co-develop new solutions and to solve technical challenges ranging from customized linear actuators to complete turn-key motion systems.

Application Examples

Trim Press Actuator designed for high load and rigidity with long service interval before relubrication maintenance. Scan the first QR code to watch the video.



Extruded Profile Guides are linear guide machine elements based upon aluminum extrusions. For more information, scan the second QR code to watch a video Webinar: How to Regain Design Freedom with Extruded Profile Guides.



Multi-axis Gantry Actuator Assemblies enable automated motion within a working envelope to complete a wide range of tasks. LoPro® linear actuators are frequently attached together to form multi-axis motion systems. See image at right and scan the third QR code to download the product catalog.



Value-Add Services Menu

DESIGN

- Customization
- Optimization
- Controls Programming
- Prototype

MANUFACTURE

- Custom Machining
- Production Machining
- Special Finishes, Coatings
- Custom Motion Solutions

BUILD

- Sub-assembly
- System Configuration, Assembly
- Component Kitting
- Electrical Wiring

MANAGE

- Simplified Ordering
- Supply Chain Management
- Consignment Inventory
- Quality Inspection, Serialization