

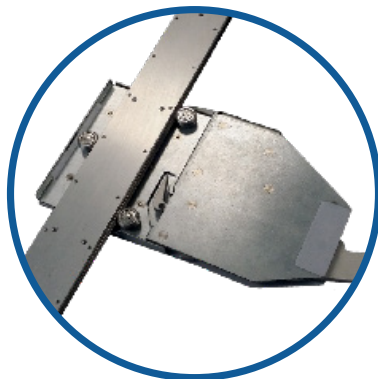
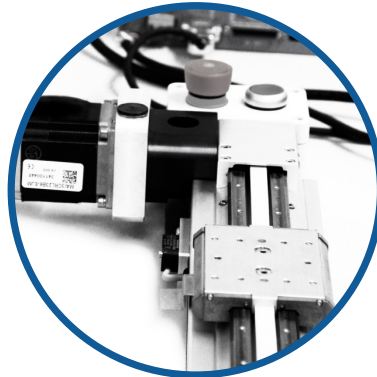


Bishop-Wisecarver (BW) develops innovative motion solutions that are expertly designed and delivered to perform from a company you can trust. Leveraging nearly 70 years of experience, Bishop-Wisecarver has earned the reputation for providing unmatched quality, reliability, service and engineering support for every stage of a customer's design cycle. Combining long-lasting performance with ease of installation, our products offer the lowest cost of ownership for a wide variety of applications ranging from aerospace and medical to packaging machinery and more.

SERVICES AND SOLUTIONS

Automation & Motion Control Systems

BW provides complete automation and robotic motion systems that are used in a wide range of applications from food packaging machinery to motion picture filming sets. We develop and supply integrated motion control projects involving durable mechanical products, electronic systems, and software programming.

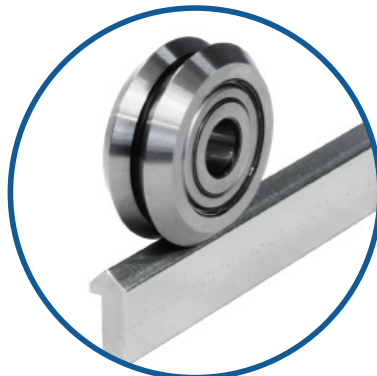


Complex Assemblies & Solutions

BW is a trusted supply chain partner that extends the capabilities and success of our customers' businesses. We consolidate multiple vendors and parts into complete sub-assemblies and solutions that streamline sourcing, scheduling, and production. We offer complex assembly of mechanical and electrical components into products that are ready for installation and operation.

Motion Products & Production Support

BW offers the widest range of guide wheel based linear motion solutions in the world. Many standard catalog items are available in a variety of designs, sizes, and materials suited for every operation environment. We customize products for specific applications or requirements and are a trusted supply chain partner for manufactured and assembled automation products.



CORPORATE OFFICE

Bishop-Wisecarver
2104 Martin Way
Pittsburg, CA 94565
Phone 925.439.8272
Fax 925.439.5931
www.bwc.com
sd@bwc.com
Twitter: @BWCnews
Twitter: @bwg_diversity

Shanghai Office
No 218, Heng Feng road, Room 1007
Shanghai 200070, China
+86.21.60400516
bsun@bwc.com

Rick Tkaczyk
Vice President of Sales
925.597.3577
rtkaczyk@bwc.com

Dan Passero
Director of Sales, Distribution
925.597.1709
dpassero@bwc.com

Bill LeBeau
Eastern Regional Sales Manager
401.871.3796
blebeau@bwc.com

David Drudge
Southeast Regional Sales Manager
404.938.6773
ddrudge@bwc.com

John Masen
Midwest Regional Sales Manager
925.597.7833
jmasen@bwc.com

Scott Cain
Western Regional Sales Manager
925.597.2874
scain@bwc.com

KEY INDUSTRIES

Aircraft & Automotive
Controlling & Measuring Instrumentation
Electronics
Engineering Services
Industrial Equipment
Machine Tool
Medical Equipment
Research & Development

Expertly Designed, Delivered to Perform

BUSINESS CAPABILITIES

Bishop-Wisecarver is a trusted and reliable partner for engineered linear and rotary motion products used in robotics and automated motion control projects that range from standard catalog motion components to complete custom complex integrated motion systems. Our innovative products, world-class engineering, and custom manufacturing capabilities offer unsurpassed design flexibility. Motion solutions from Bishop-Wisecarver are limited only by your imagination.

Complex Assemblies

- Electro-mechanical assembly
- Supply chain & assembly services
- Purchase order consolidation
- Vendor management

Automation & Integration

- Mechanical motion system design
- Electronic controls engineering
- Software & motion system integration
- Motion control system analysis

Motion Products

- Linear guide bearings
- Linear actuators & motion stages
- Rotary & curvilinear motion guides
- Automated motion systems

Production Support

- Profile extrusion design & finishing
- CNC milling/turning, grinding
- Fabrication, prototypes, production
- Finish coating, anodizing, painting

TOP NAICS AND UNSPSC CODES

325414	Biological Product (Except Diagnostic) Manufacturing	333111	Farm Machinery and Equipment Manufacturing	334314	Relay and Industrial Control Manufacturing
332312	Fabricated Structural Metal Manufacturing	333241	Food Product Machinery Manufacturing	334511	Search, Detection, Navigation, Guidance, Aeronautical and Nautical System and Instrument Manufacturing
332710	Machine Shops	333517	Machine Tool Manufacturing	334515	Instrument Manufacturing for Measuring and Testing Electricity and Electrical Signals
332721	Precision Turned Product Manufacturing	333993	Packaging Machinery Manufacturing	334516	Analytical Laboratory Instrument Manufacturing
332999	All Other Miscellaneous Fabricated Metal Product Manufacturing	333999	All Other Miscellaneous General Purpose Machine Manufacturing	334519	Other Measuring and Controlling Device Manufacturing
2315341	Custom Assembly Fixtures or Tooling (UNSPSC Code)	336413	Other Aircraft Parts and Auxiliary Equipment Manufacturing	541330	Engineering Services
		336414	Guided Missile and Space Vehicle Manufacturing		

TECHNICAL CAPABILITIES

ASSEMBLY SERVICES AND KITTING

- Up to 40k feet of available contract manufacturing production floor space
- Kitting and sub-assemblies to full turnkey solutions
- Quality traceability reports available
- Flexible, scalable workforce
- Single prototypes to thousands per month

FABRICATION AND PRODUCTION

- Precision CNC machining
 - Milling, boring, turning, engraving
- Product finishing operations
 - Painting, anodizing, plating, coating
 - Heat-treating, hardening, annealing
- Sheet metal fabrication
- Waterjet and laser cutting up to 60"x120"
- Quality inspection certification, CMM reporting, hardness testing

ENGINEERING SOLUTIONS AND DESIGN

- Mechanical design
 - Motion systems and actuators
 - Mounting systems and support structures
 - Electronics packaging
- Electrical design
 - Controllers
 - Amplifiers
 - Transducers (sensors, motors)

NEW PRODUCT INTRODUCTION

- Prototyping
- Design refinement for production
- Supply chain development
- Alpha beta testing

MOTION CONTROL

- Multi-axis motion control
- Customizable motion trajectories
- Servo drive controllers
- Microcontrollers
- Programmable logic controllers

ENGINEERING ANALYSIS AND MODELING

- 3D CAD modeling and 2D drawings
 - Components and assemblies
 - Manufacturing ready designs
 - Dimensioning and Tolerancing
- Finite Element Analysis
 - Mechanical and structural
 - Stress analysis
 - Modal analysis

SYSTEM INTEGRATION

- Actuators
- Sensors
- Electronics
- Integrating mechanical actuators

CERTIFICATIONS & CONTINUOUS IMPROVEMENT

QUALITY CERTIFICATIONS



OTHER BUSINESS CERTIFICATIONS

- EN 9100:2009
- JISQ 9100:2009
- ISO 13485 & GMP Compliance
- Certified Bay Area Green Business

CONTINUOUS IMPROVEMENT PROGRAMS

- Six Sigma
- Kaizen / Lean
- 7Q
- Sustainability Efforts